

Computronics Electronic Display Systems design & functionality



Crown Casino, Melbourne



Bloomberg, Sydney



Mounties, NSW



Mecca Cosmetica, Myer Sydney



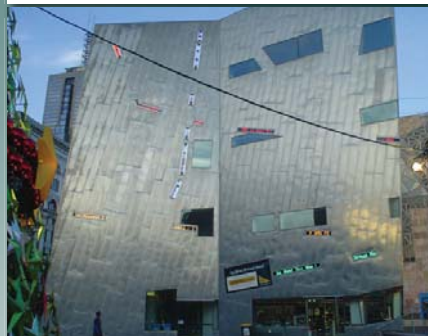
Chanel Make-up Studio, Myer Sydney



Sportsgirl Concept Store, Melbourne



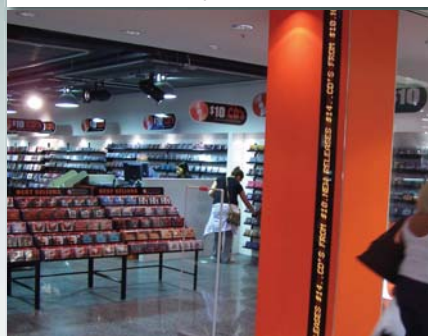
Eureka Skydeck, Melbourne



Federation Square, Melbourne



Kino Cinemas, Melbourne



Rockbottom Music, Sydney

Give an added dimension to your next fit-out project with functional LED displays

Engage customers with relevant and timely messages on LED displays.

Messages can be instantaneously updated or programmed daily, weekly, or monthly to keep information fresh.

LED displays combine low power and low maintenance with unparalleled visibility, making them an excellent choice for adding functionality and style to any location's decor.

The LED Advantage

- People actually read LED messages; being accustomed to reading LED messages at airports, cinemas, roads and train stations.
- Clearly visible day or night; legible at greater distance than similar-sized illuminated signs.
- Change messages, at no charge, whenever required. (Static signs cost money to change.)
- LEDs are reliable, low maintenance, 'Solid State' devices (not globes) that have a long life span of over 100,000 hours. LEDs run on low voltage and use little power, meaning BIG savings on power bills.

For further information contact **Computronics** on **1300 888 506** or email sdsales@computronics.biz

Computronics offer a 2 year warranty on parts and materials (BTB).

Service technicians available through Australia.

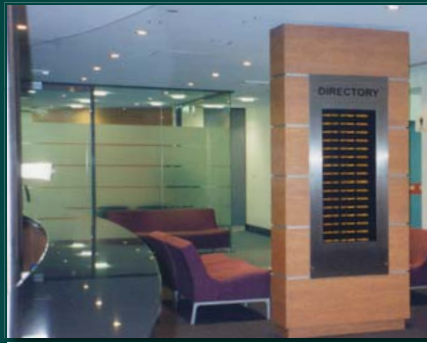


 **Computronics**
Corporation Ltd

www.computronics.biz



SINGLE LINE LED DISPLAY - RED



DIRECTORY SYSTEM



SINGLE LINE LED DISPLAY - BLUE



RGB SCREEN - INDOOR MOTION DISPLAY



SINGLE LINE LED DISPLAY - RGB



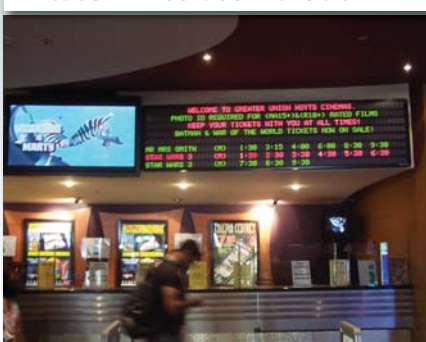
SINGLE LINE LED DISPLAY - BLUE



RGB SCREEN - OUTDOOR VIDEO DISPLAY



VISION VIEWER



MULTI-LINE SIGN - CINEMA SESSION TIMES



VMS PYLON SIGN

Electronic displays include:

- **RGB screens**
Full colour LED displays and video wall screens
- **Variable message displays (VMS)**
mono colour options: red, yellow, green, white, blue etc
- **Single line LEDs**
Available in a variety of colours and shapes for custom fitouts

Other electronic products

- **Billboards**
- **Bookieboards**
- **Cinema displays**
- **Currency Board**
- **Changeable message displays**
- **Directory systems**
- **Menu boards**
- **Mobile trailer screens**
- **Parking guidance display**
- **Safety/production display**
- **Stadium perimeter display**
- **Scoreboards**
- **Vision viewer**

COMPUTRONICS CLIENTS INCLUDE:

AIRPORTS: Brisbane Airport | Sydney Airport | Auckland Airport | **CARPARKS:** Wilson Parking | Secure Parking | Kings Parking | **CASINOS:** Crown Casino | Star City Casino | Skycity Casino | **CINEMAS:** Kino Cinemas | Hoyts | Greater Union | Reading Cinemas | Village Roadshow | **CLUBS:** The Ranch Hotel | Tattersalls | Moorebank Sports Club | St Marys Leagues | Club Rivers | Mounties | Taren Point Bowling Club | **CONFERENCE CENTRES:** Cairns Convention Centre | Sydney Convention Centre | **ENTERTAINMENT VENUES:** Astor Theatre | Canberra Theatre | Hordern Pavillion | Christchurch Entertainment Centre | Sutherland Entertainment Centre | Wollongong Entertainment Centre | **FINANCE:** ASIC | Bloomberg | Bank of Queensland | Commonwealth Bank | Connect Finance | Mortgage Choice | Westpac | **GAMING:** Keno Australia | Tabcorp | **LANDMARKS:** Federation Square | Eureka Skydeck | **HOTELS:** Sheraton Group | Adelaide Hilton | Shangri-La Hotel | Four Seasons Hotel | **STADIUMS:** AAMI Stadium | BCU International Stadium | Parramatta Stadium | Win Stadium | Medibank Stadium | Melbourne Cricket Ground | Aussie Stadium | Queensland Tennis Centre | Perth Hockey Stadium | Brookvale Oval | **SPORTS:** Ian Potter Aquatic Centre | Rosehill Gardens Racecourse | Royal Randwick Racecourse | Sydney United Football Club | Manly Warringah Council | **RESOURCE:** Alcoa | BHP Billiton | BP | Shell | Caltex | Macquarie Generation | Transgrid | Wesfarmers | Woodside Energy | **TRAVEL:** Qantas | Harvey World Travel | Flight Centre **TRANSPORT:** Europcar | Brisbane Airtrain | City Rail | Rail Corp | Faveley Transport | **UNIVERSITIES:** University of NSW | Wollongong University | University of Western Australia | University of Adelaide | **SCHOOLS:** Sydney Boys High | Scotch College | Endeavour Sports High | Hale School | **RETAIL:** Woolworths | Coles | Myer | Sportsgirl | Chanel | Mecca Cosmetics | Reebok | 3M | Coca-cola |

For further information, visit our website, or contact Computronics on **1300 888 506** or email sdsales@computronics.biz



www.computronics.biz